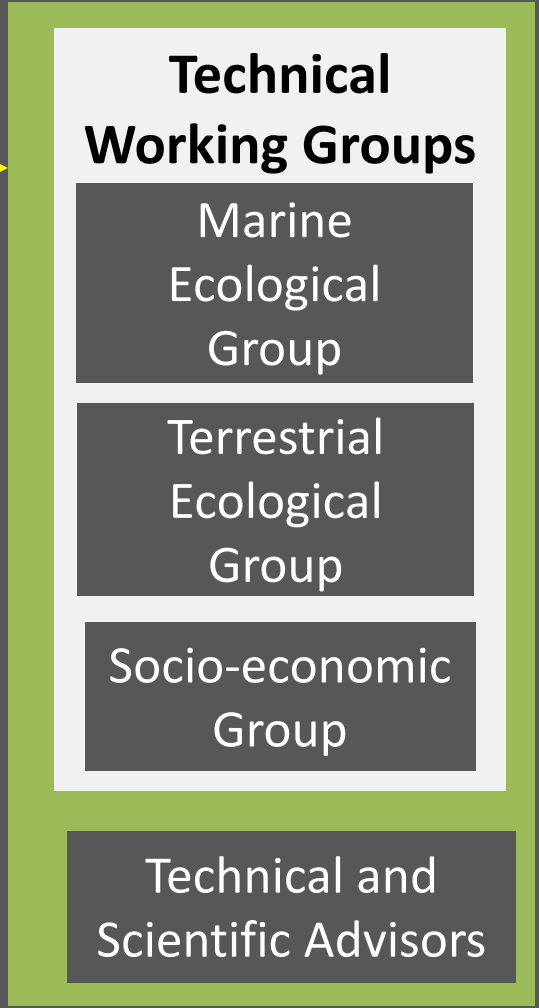
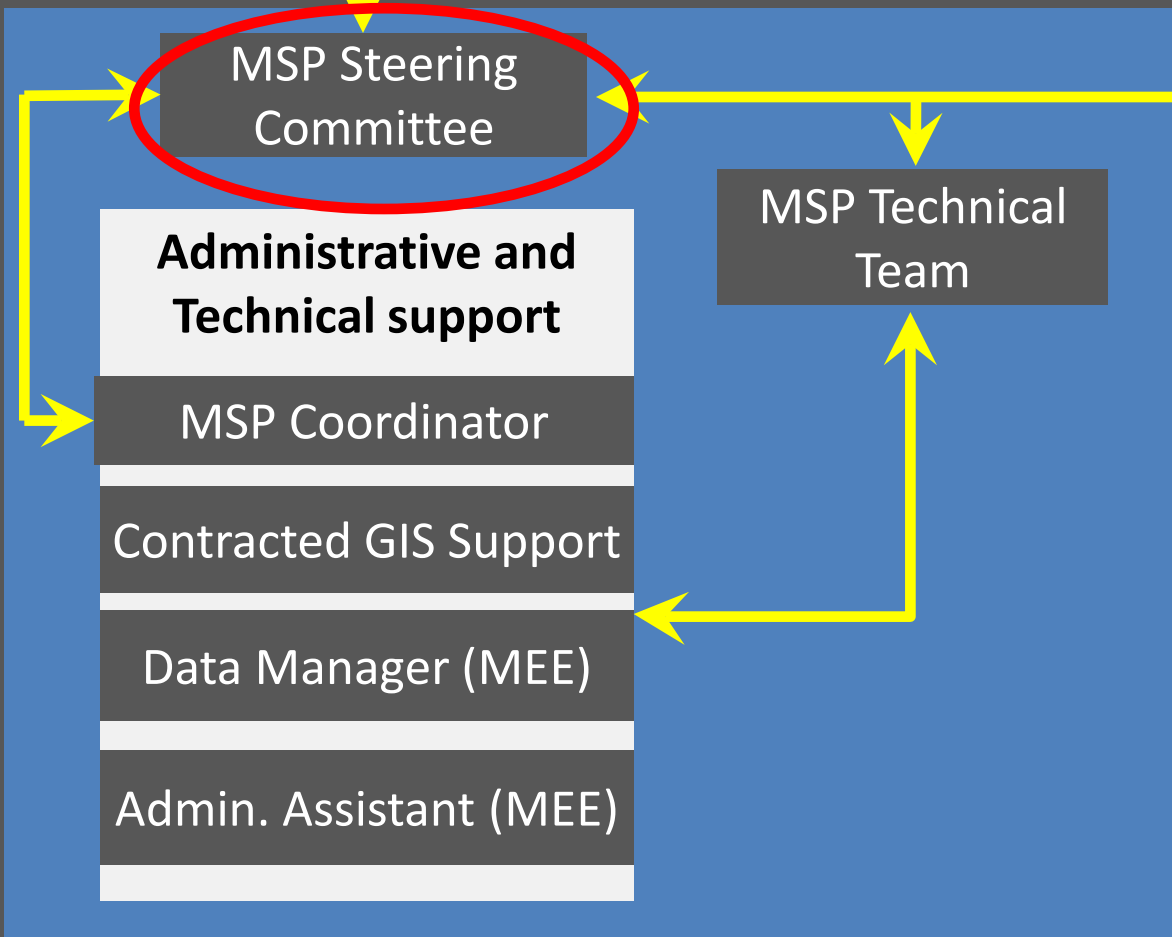


SEYCHELLES MSP INITIATIVE - GOVERNANCE & PROCESS STRUCTURES

GoS Ministerial Group (MEE, MNR, MLUH, MFTI)

Executive Management

Planning & Process Management



Advisory To Process

PLANNING AND PROCESS MANAGEMENT

MSP Steering Committee (SC)

- Ministry of Environment and Energy
- Ministry of Natural Resources
- Ministry of Land-Use and Housing
- Ministry of Finance, Trade & Investment
- Seychelles Fishing Authority
- Seychelles National Parks Authority
- Fisheries
- Tourism
- Petroleum
- Liaison Unit of NGOs of Seychelles (LUNGOS) and non-LUNGOS (3)

Technical Working Groups

- Socio-economic Group
- Marine Ecological Group
- Terrestrial Ecological Group

ADVISORY TO PROCESS

**MSP Coordinator/
SC Secretary**

**MSP Technical
Team Lead**

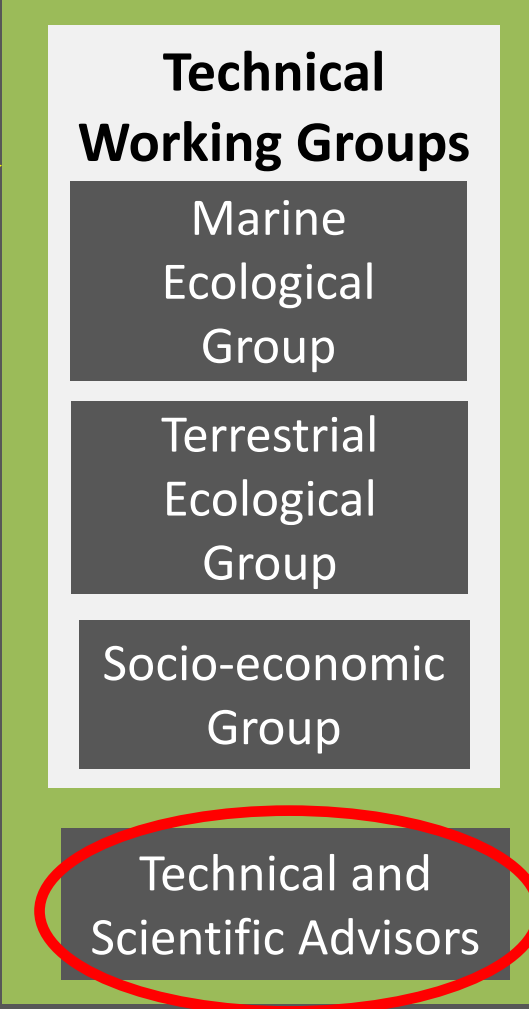
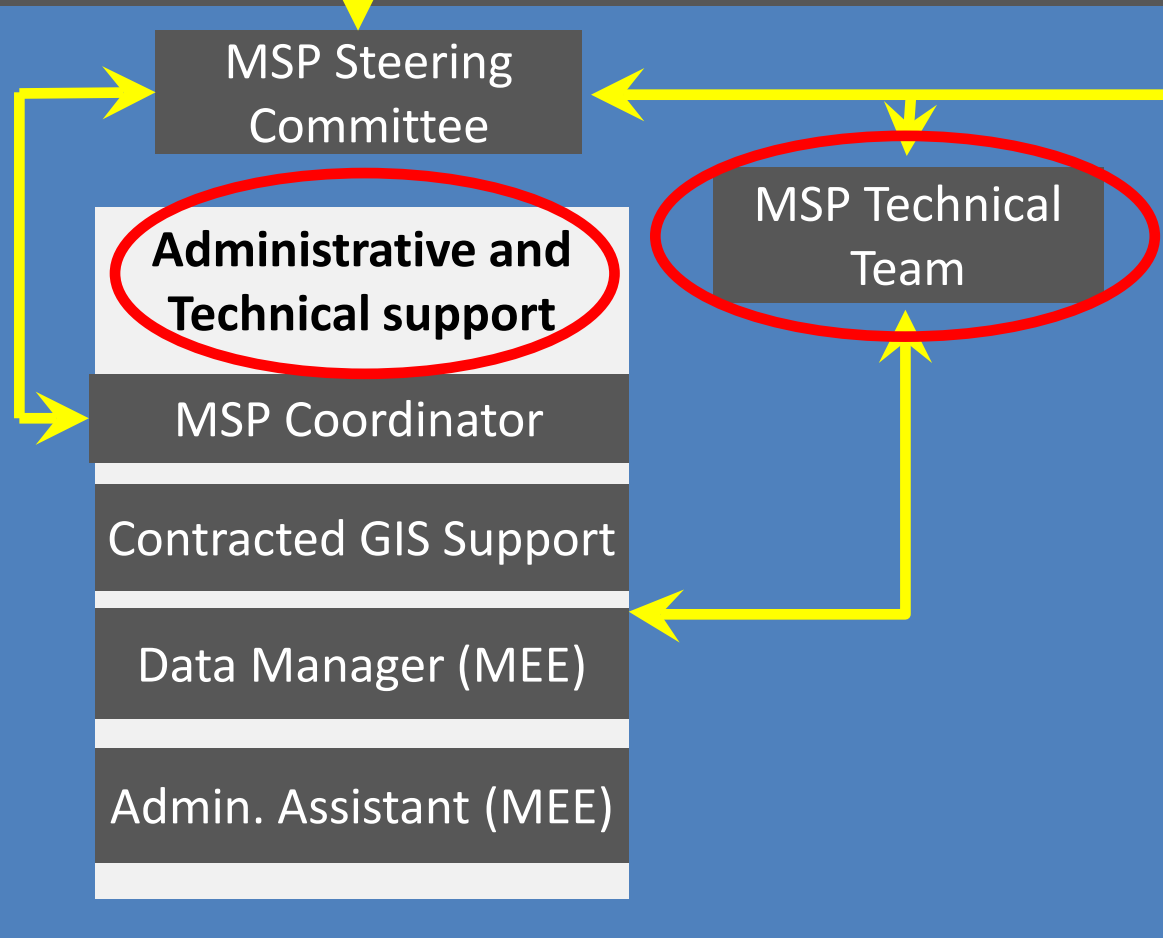


SEYCHELLES MSP INITIATIVE - GOVERNANCE & PROCESS STRUCTURES

GoS Ministerial Group (MEE, MNR, MLUH, MFTI)

Executive Management

Planning & Process Management



Advisory To Process

MSP Steering Committee (SC)

Planning and Process Management

MSP Coordinator/
SC Secretary
Iris Carolus

Admin. and Technical support

Contracted GIS
Support
Rick Tingey

Data Manager (MEE)
Justin Prosper

Admin. Assistant
(MEE)
Sabrina Renaud

MSP Technical Team

Team Lead
Julie Robinson

Nathalie Zenny
Eddie Game
Joanna Smith
George Maina
Rebecca Klaus

Technical and Scientific Advisors

Rod Salm
Alison Green
Vera Agostini
Josh Goldstein
Andrew G.
Johns
Helena Sims

Technical Working Groups

Socioeconomic

Terrestrial

Marine

*Advisory to
Process*

Supporting Documents

TERMS OF REFERENCE FOR THE SEYCHELLES MARINE SPATIAL PLANNING INITIATIVE STEERING COMMITTEE

1. INTRODUCTION AND BACKGROUND TO THE MARINE SPATIAL PLANNING INITIATIVE

The Republic of Seychelles is an island archipelago in the Indian Ocean, consisting of 115 islands with a total land area of 444 Km², spread over 1.3 million km² of the western Indian Ocean. With an Exclusive Economic Zone (EEZ) almost 3,000 times bigger than its land mass, and rich in natural resources and biodiversity, the Government of Seychelles identified the importance and need to develop a plan for current and future use of this area.

The Government of Seychelles (GoS) recognizes the need to establish a transparent, scientifically robust and evidence-based participatory process by which to undertake this planning process, working in partnership with both government and non-government stakeholders, harnessing local knowledge and expertise and in full recognition of the important contribution of non-state actors. The Government of Seychelles has chosen to implement a Marine Spatial Planning (MSP) approach and recently launched a Marine Spatial Planning Initiative to prepare a plan that optimises the sustainable use and effective management of the Seychelles EEZ while minimizing conflicts among multiple sectors and users.

MSP is an internationally-recognised and applied process for planning and management of the marine space. Used in countries and regions as disparate and complex as Europe and China, it is defined by UNESCO as *"a practical way to create and establish a more rational organization of the use of marine space and the interactions between its uses, to balance demands for development with the need to protect marine ecosystems, and to achieve social and economic objectives in an open, [participatory] and planned way"* (http://www.unesco-ioc-marinesp.be/msp_guide).

As with many planning processes, MSP does not lead to a one-time plan but instead it can be perceived as a continuing, iterative process that learns and adapts over time (Ehler and Douvère 2009¹). MSP can be thought of as a series of inter-linked activities. Each individual activity consists of a number of iterative steps, which may involve the use of decision-support tools such as MARXAN to help inform the design, the input of local experts and adaptive feedback loops. In anticipation of this fact, the Government of Seychelles has adopted a phased approach and integrated the planning process into a number of different projects to facilitate the sequential progression and to allow time for the refinement of planning outcomes.