

SEYCHELLES Marine Spatial Plan

Photo: Jason Houston



Joanna Smith, PhD
Seychelles MSP Process and Science Lead
Helena Sims
Seychelles MSP Project Manager

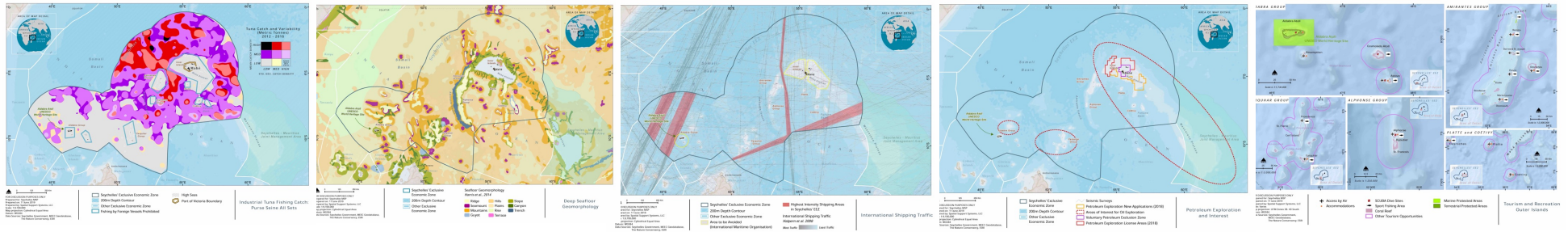


Seychelles: First ocean debt conversion in the world



- **\$21.6 M debt conversion that closed in February 2016 to reduce Seychelles foreign debt and increase national investment in marine conservation.**
- **Seychelles committed to expanding marine protected areas from 0.04% to more than 30% by December 2020.** More than 150 stakeholders are involved and more than 250 meetings and workshops - the most ever in the country for a planning process.
- **TNC supported Seychelles to establish and operationalise the Seychelles Conservation and Climate Adaptation Trust (SeyCCAT).** More than \$400,000 is available annually for Blue Grants Fund for conservation, climate change and the Blue Economy in Seychelles. Additional funding from \$15M sovereign 'blue bond' brings annual granting to more than \$750,000.
- **By March 2020, 13 marine protection areas have been legally gazetted totalling more than 410,000 km².** Management plans and enforcement will ensure effective protection of these areas. Implementation will begin in 2023. A range of protections are included in the system and improved ocean management for the remainder of 1.35 million sq km.

Spatial Data Catalogue - more than 100 layers



FISHERIES

Domestic Fishing
Industrial Fishing
Sport Fishing
Mariculture
Participatory Mapping

BIODIVERSITY FEATURES

Benthic geology
174 "features"
Marine species
EBSA, IBA, WIOMER
Participatory Mapping

INDUSTRIAL & PUBLIC UTILITIES

Ferries & Shipping
IMO Marine Highways
Ports & Marinas
Renewable Energy
Participatory Mapping

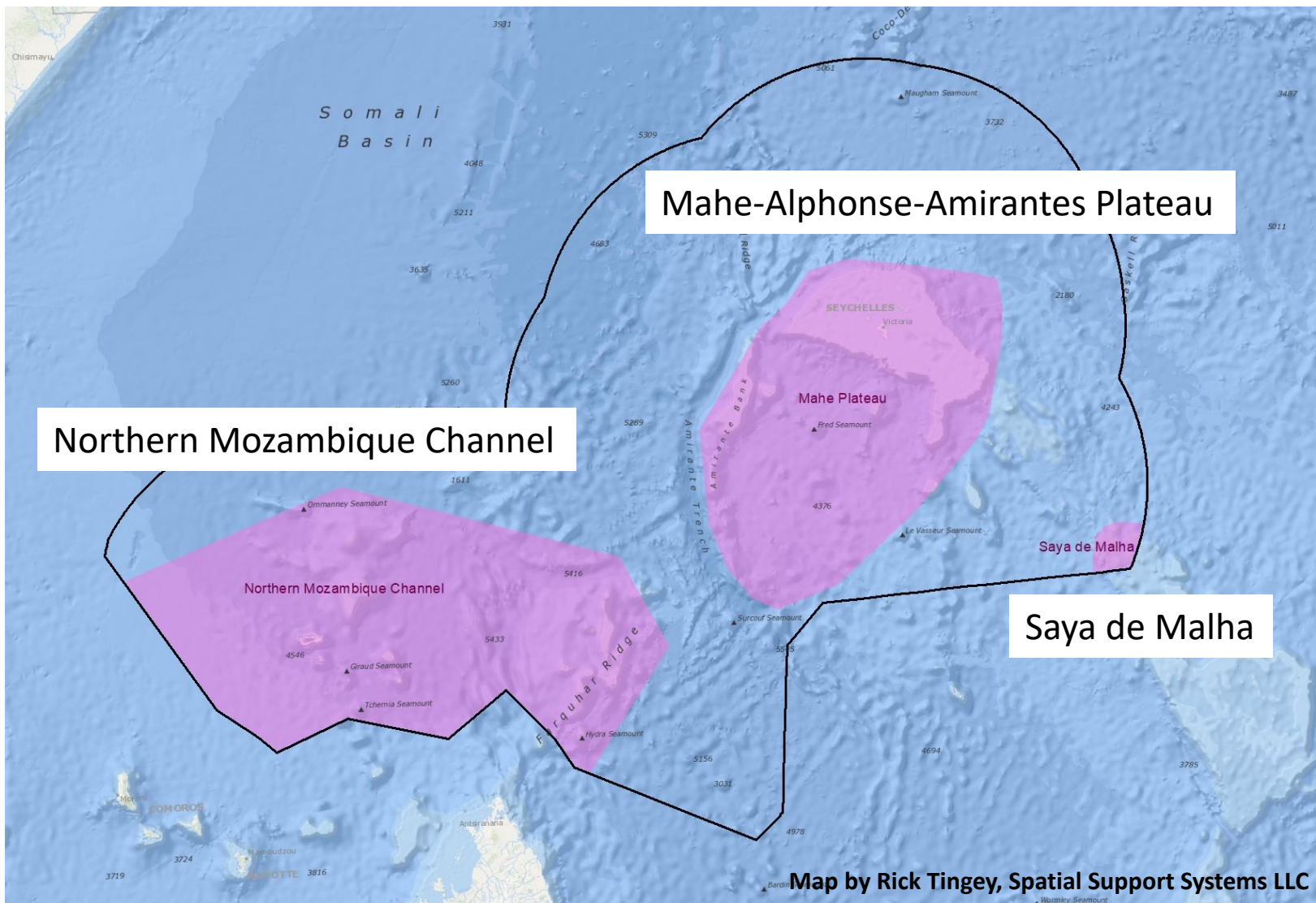
NON-RENEWABLE RESOURCES

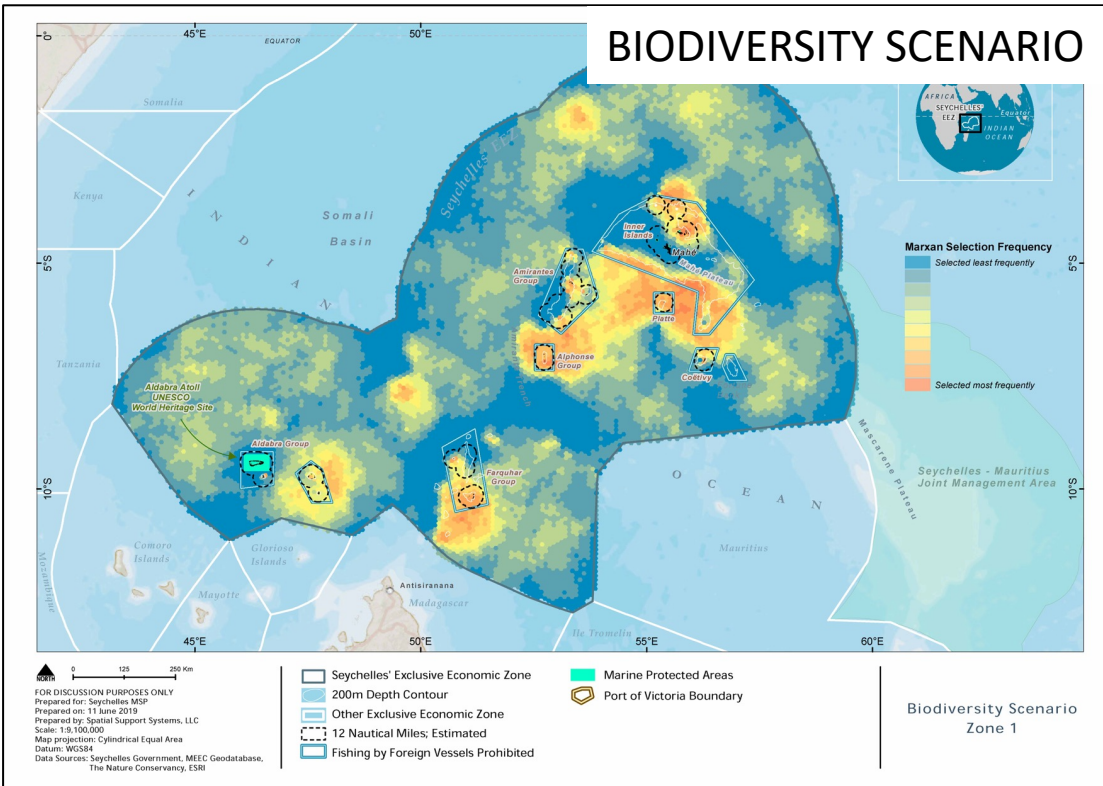
Licensed Blocks
Low Gravity Areas
Seismic Surveys
Sand Mining
Participatory Mapping

TOURISM & RECREATION

Marine Charters
Diving, Snorkeling
Viewpoints
Accommodation
Participatory Mapping

3 CBD EBSAs in the SMSP database

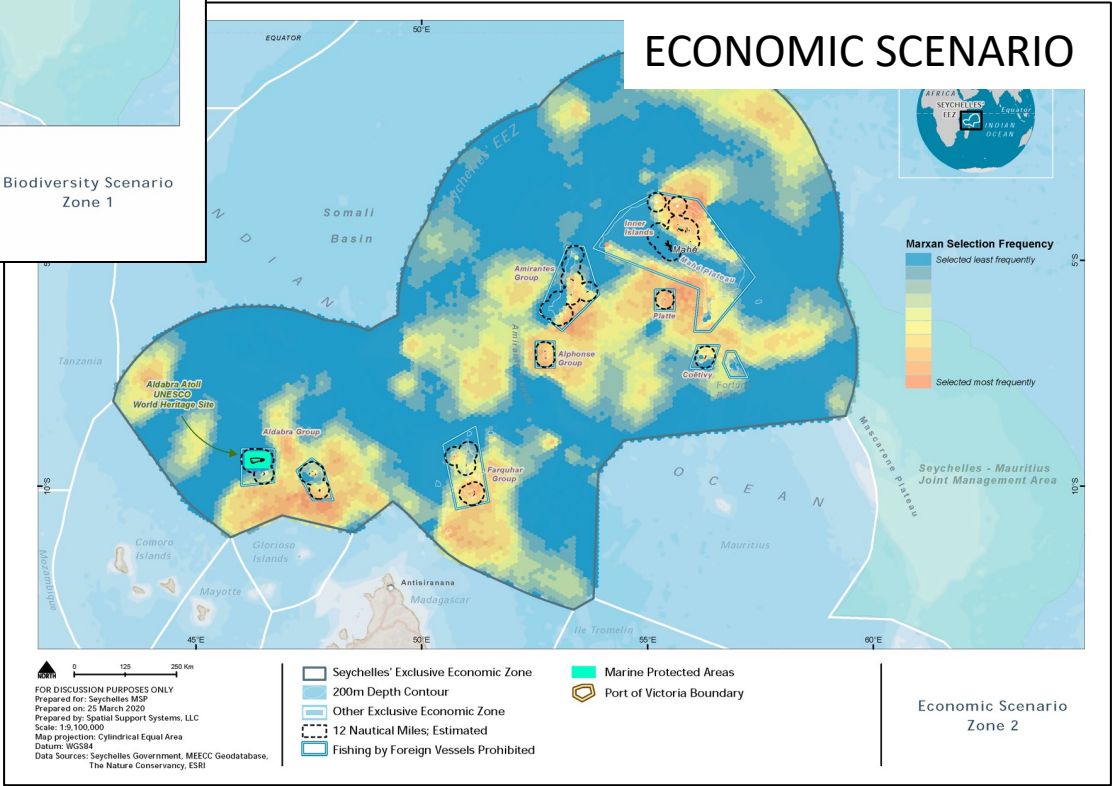




Marxan with Zones

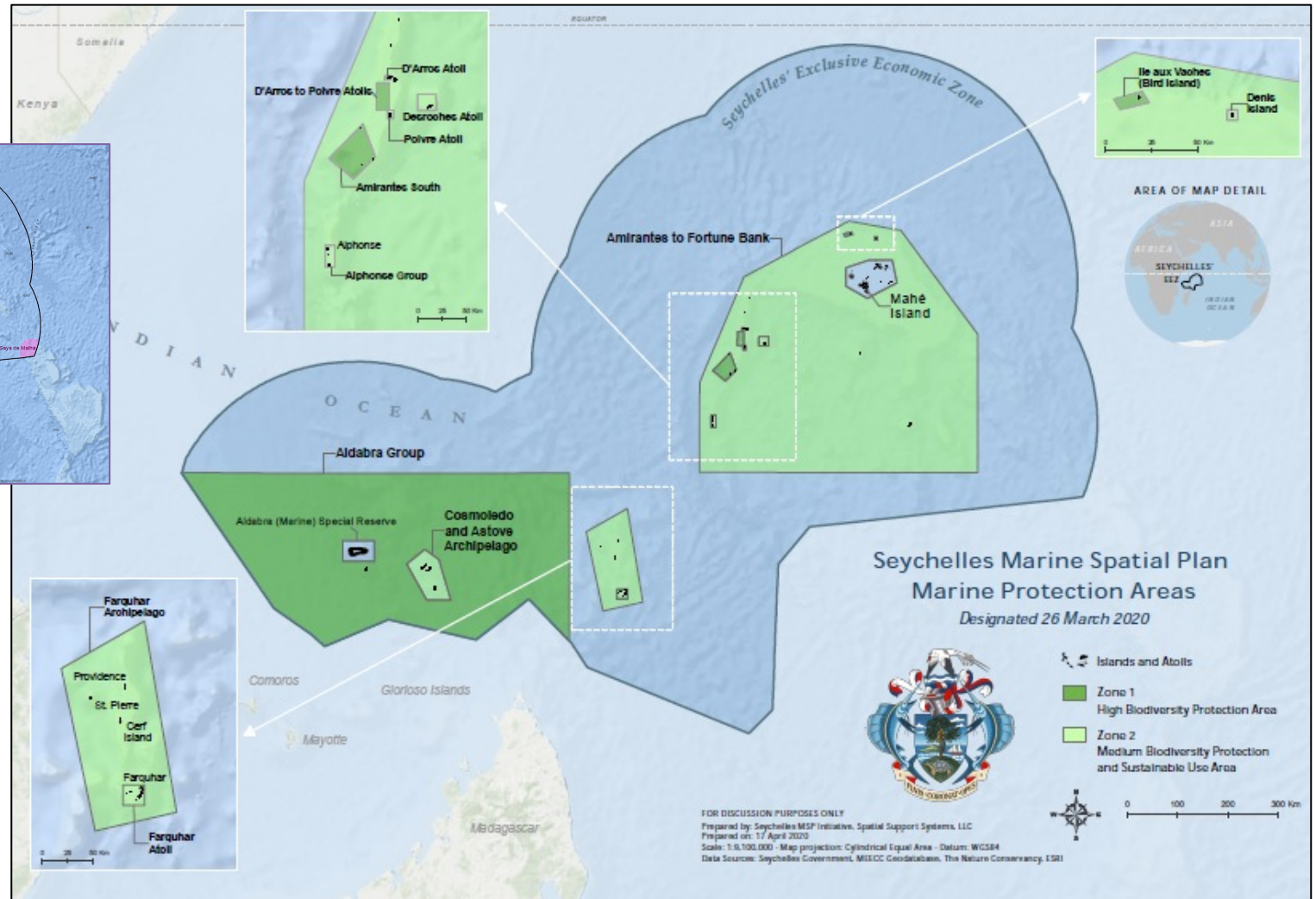
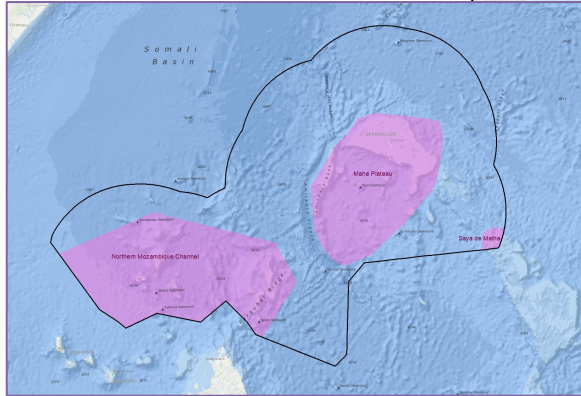
EBSAs used as a data layer in the spatial prioritization

Maps by Rick Tingey, Spatial Support Systems LLC



Seychelles MSP - marine protection areas

EBSA Layer



Maps by Rick Tingey, Spatial Support Systems LLC

EBSAs and the Seychelles MSP

- EBSAs are useful for marine planning, including in the design of Marine Protected Areas.
- The Seychelles Marine Spatial Plan (SMSP) was initiated in 2014 and is led by Government of Seychelles, with support from The Nature Conservancy.
- Three (3) EBSAs were included in the database for the SMSP to meet a 30% marine protection target for Seychelles 1.35 million sq km ocean space.
- EBSAs build important awareness about ocean areas.
- They have some limitations because they are coarse scale and it is more spatially accurate to map individual species and habitats in order to meet both area and biodiversity representation goals.

